

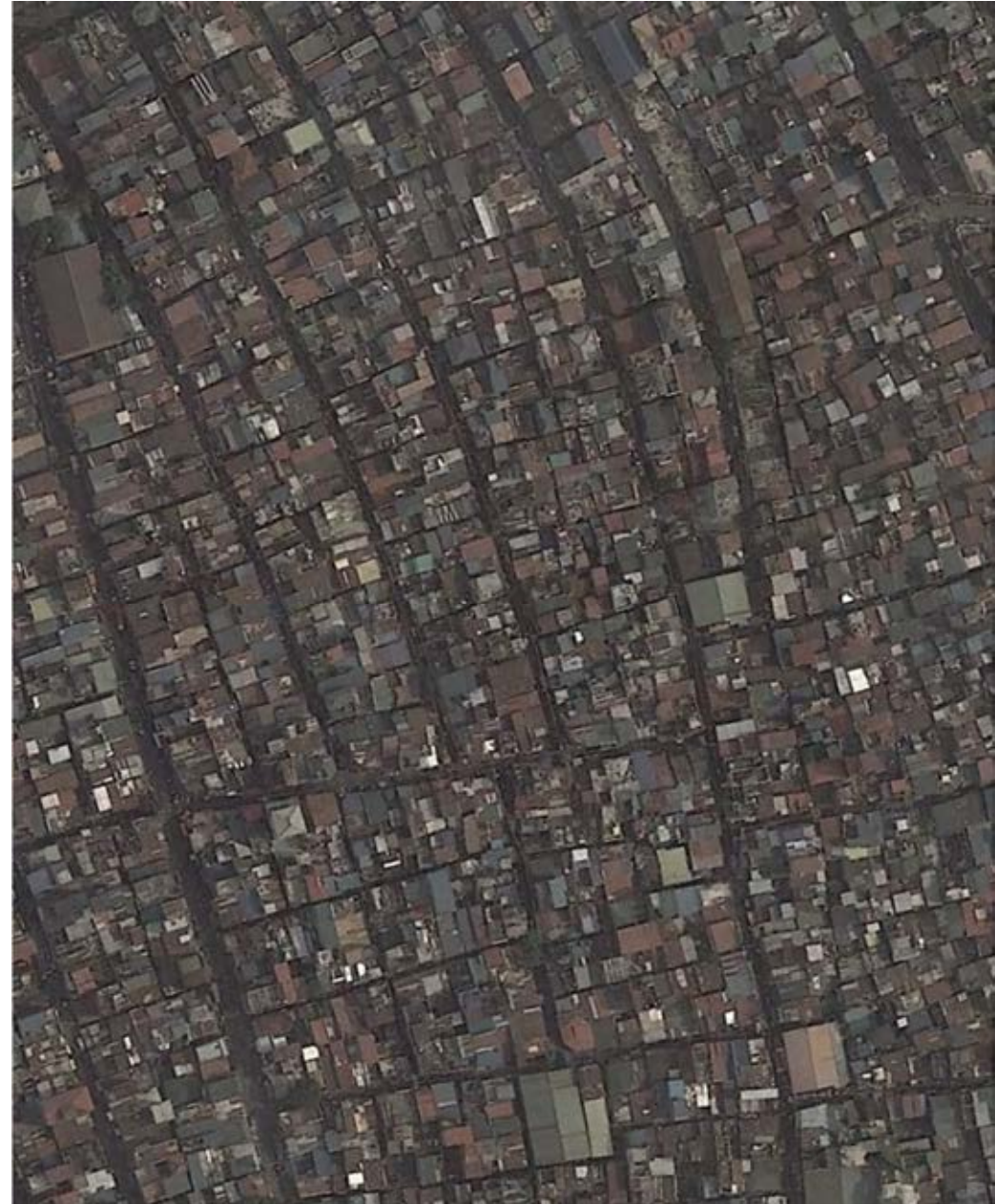


CONFLICT IN URBAN ENVIRONMENTS

CLEMENTINE RENDLE, REGIONAL LEGAL ADVISER

CONTENTS

1. Patterns of civilian harm in an urban environment
2. Essential services and civilian infrastructure
3. Preventing and addressing civilian harm
4. Resources



PATTERNS OF CIVILIAN HARM

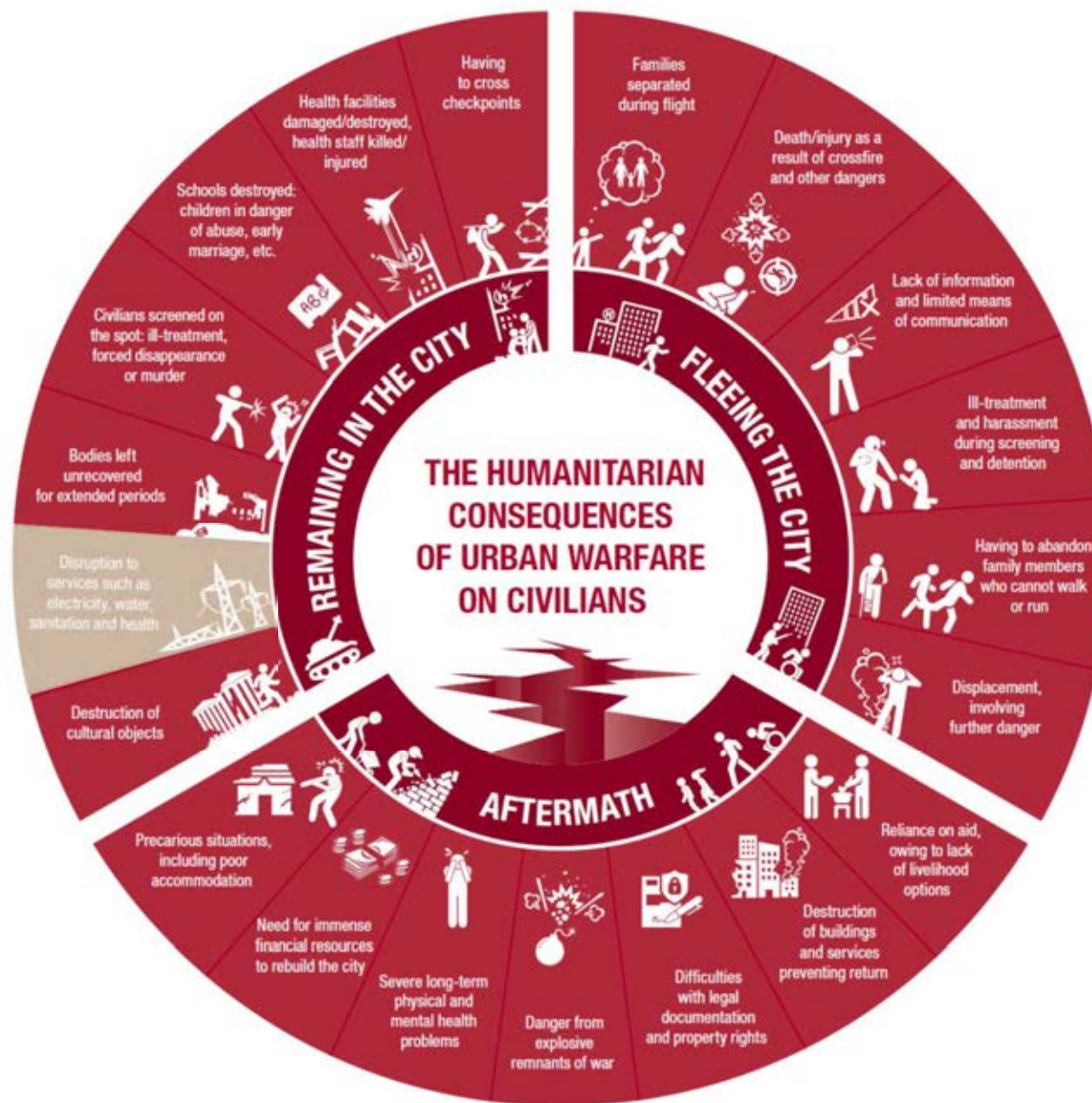




PATTERNS OF CIVILIAN HARM

CHALLENGES

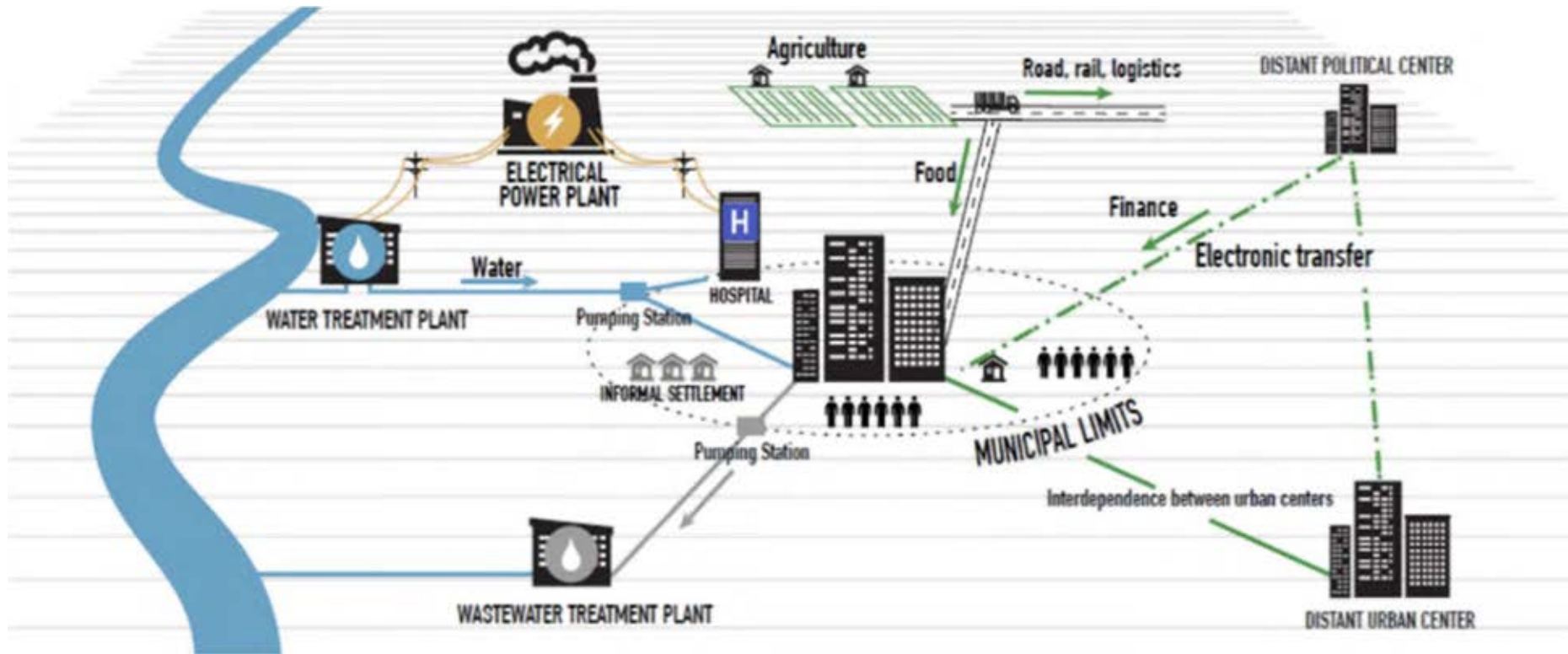
- characteristics of the environment
- vulnerability of civilians therein
- asymmetry of forces
- military tactics and weapons
- duration



ESSENTIAL SERVICES AND CRITICAL INFRASTRUCTURE

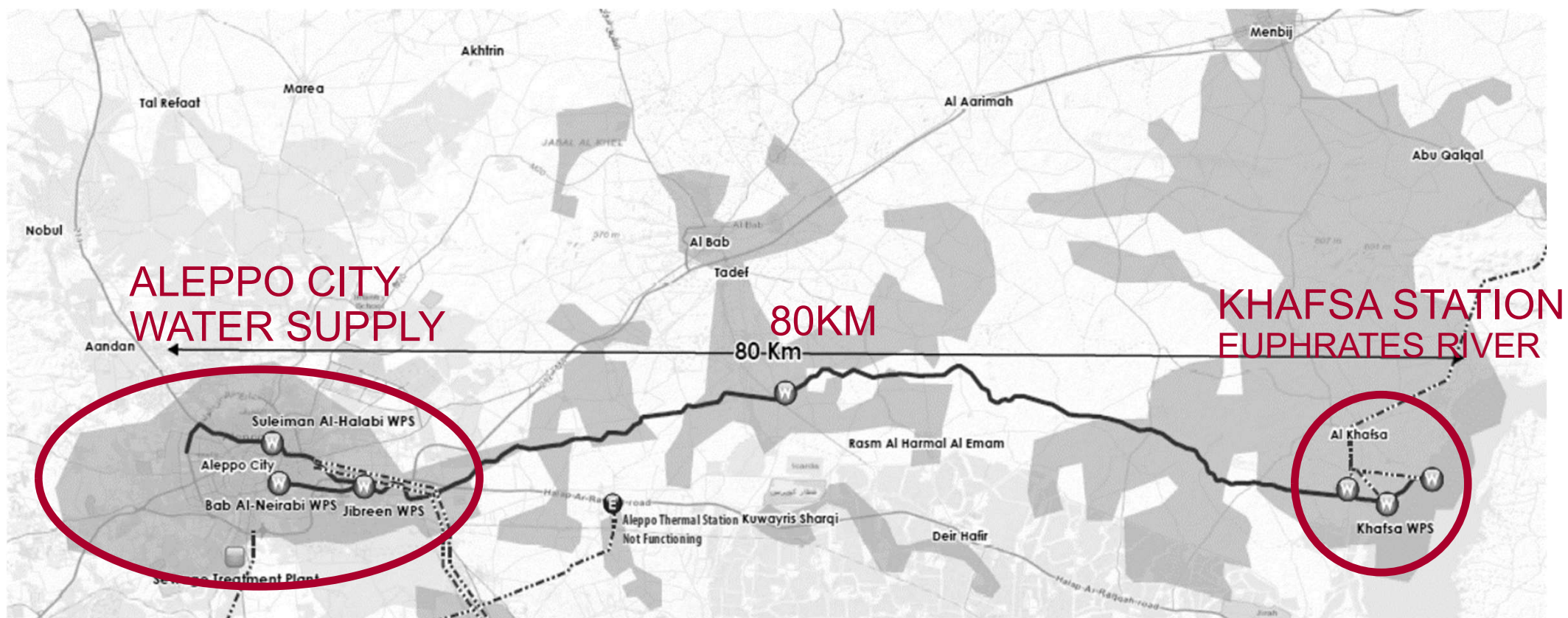


CHARACTERISTICS



- SIZE
- COMPLEXITY
- INTERCONNECTIVITY AND INTERDEPENDENCE
- HIERARCHY OF INFRASTRUCTURE

CHARACTERISTICS



→ SINGLE POINTS OF FAILURE AND VULNERABILITIES

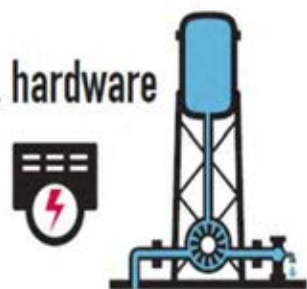
CHARACTERISTICS

All essential services depend on ...

... people



... hardware



... consumables



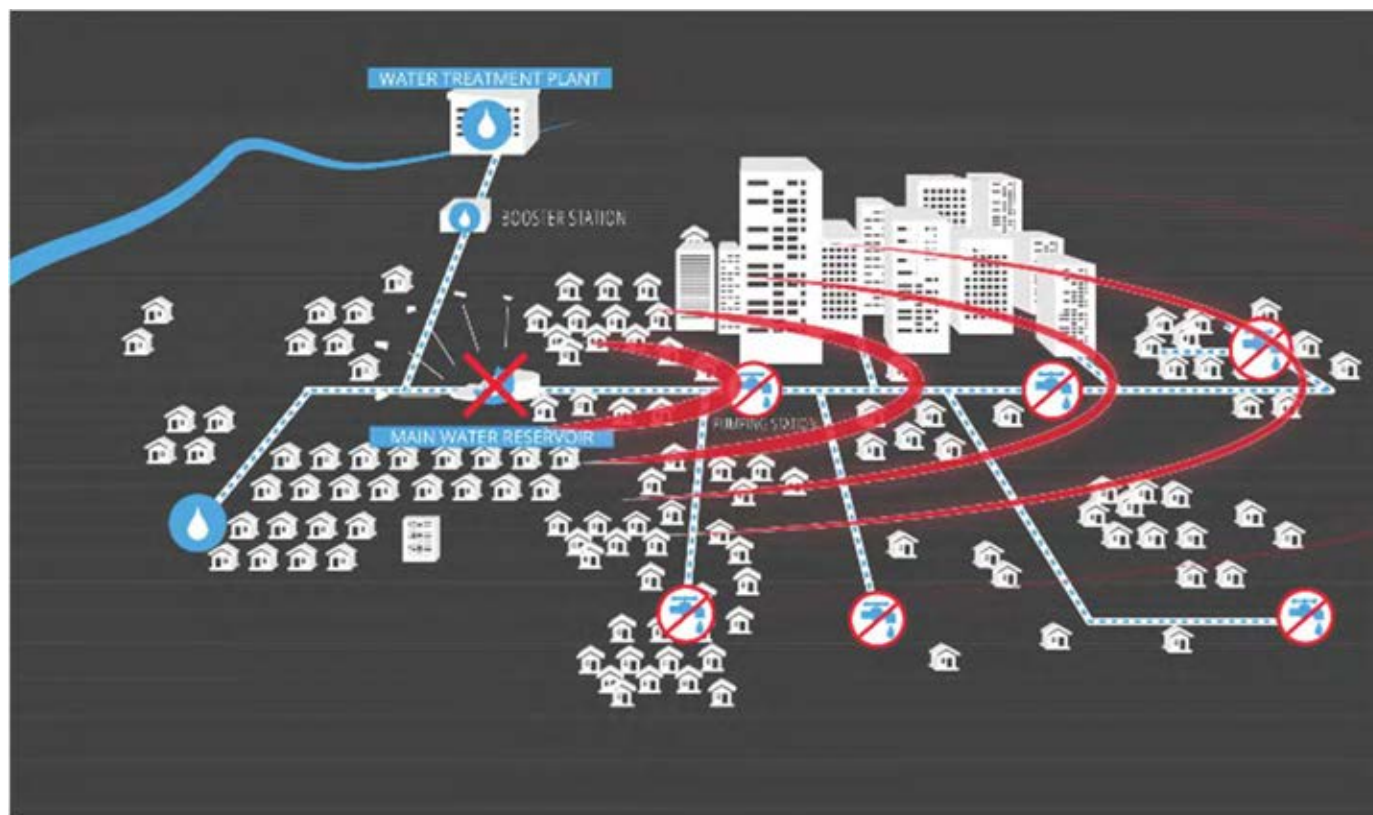
→ SERVICE CONTINUITY

Animation: ICRC, Explosive weapons in populated areas,
<https://www.youtube.com/watch?v=x25Hv2zB1cY>



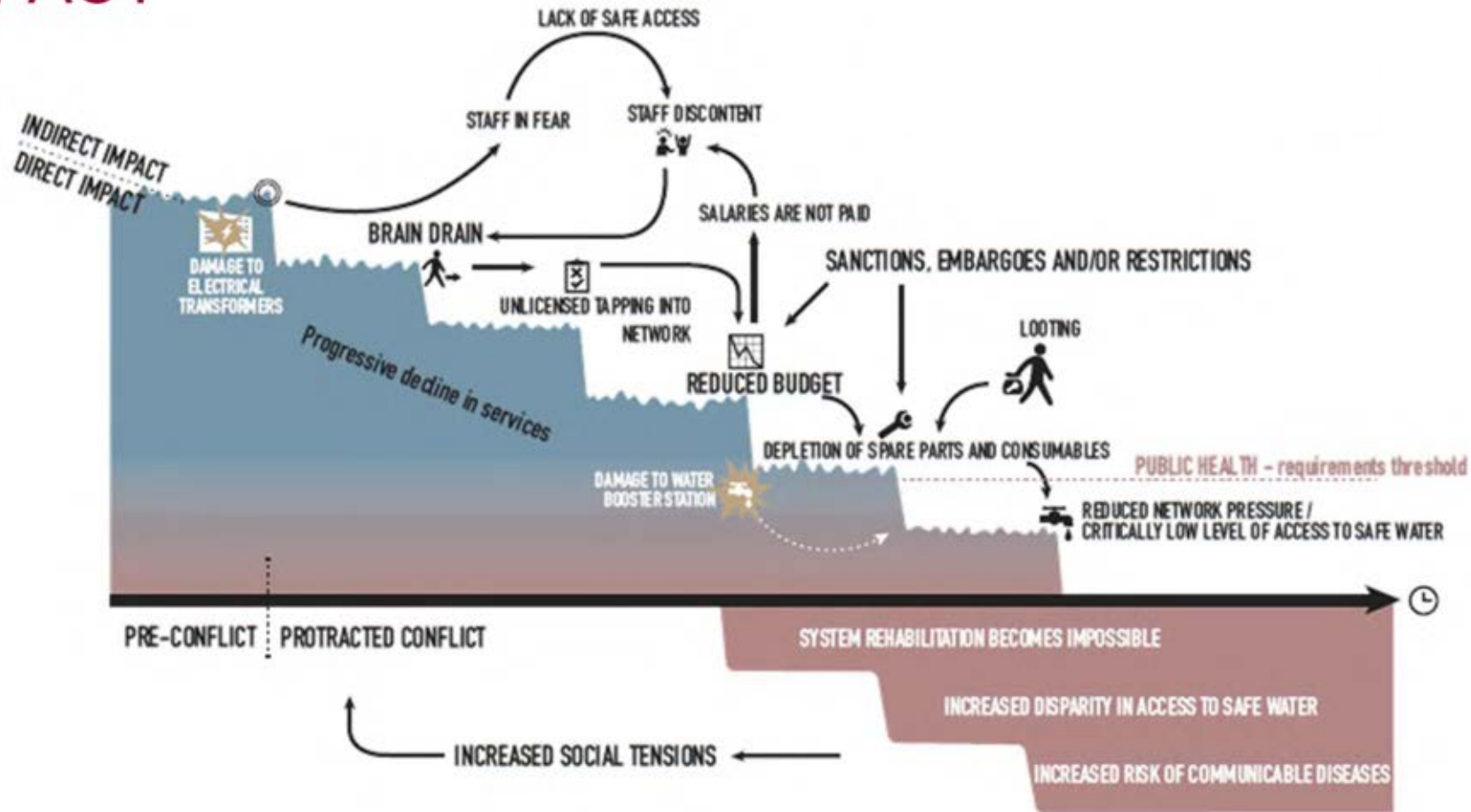
ICRC

IMPACT



→ REVERBERATING EFFECTS

IMPACT



→ CUMULATIVE EFFECTS



ICRC

PREVENTING AND ADDRESSING CIVILIAN HARM



PREVENTING AND ADDRESSING CIVILIAN HARM

IHL / LOAC

- Conduct of hostilities rules:
 - Distinction
 - Proportionality
 - Precautions
- Siege/encirclement tactics
- Evacuations and forced displacement
- Human shields



EXPLOSIVE WEAPONS IN POPULATED AREAS

- Wide area effects:
 - Large destructive radius
 - Lack of accuracy
 - Multiple munitions over wide areas
- Grave pattern of harm
- Likelihood of indiscriminate attack





PREVENTING AND ADDRESSING CIVILIAN HARM

EWIPA POLITICAL DECLARATION

- **Train** armed forces on IHL, policies and good practices
- Policies and practices to avoid civilian harm, including **restricting and refraining from use of EWIPA**
- Take into account **reasonably foreseeable direct and indirect effects** in planning and execution
- Collateral **damage assessments**
- Share **data** on civilian harm and **expertise**

DOCTRINE

- Reflect 'why' and 'how' of Protection of Civilians

TRAINING

- A focus on fighting in **populated** areas rather than fighting in **built up** areas
- Should as far as possible involve a **representative civilian population**





PREVENTING AND ADDRESSING CIVILIAN HARM

PLANNING

- Set **expectations**
- Consider '**human terrain**' in all respects
- Detailed planning for specific operations (ie **evacuations** and **screening**)
- Reflect likely civilian actions and reactions in evaluation of courses of action (**wargaming**)



PREVENTING AND ADDRESSING CIVILIAN HARM

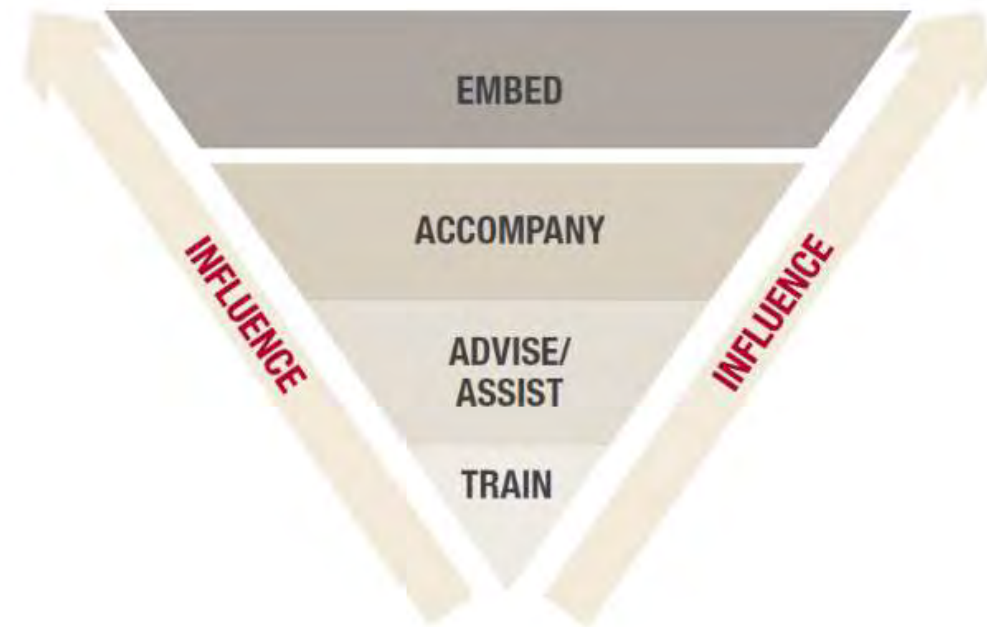
OPERATIONS

- Avoid urban combat
- IHL compliance
- All feasible precautions
- Choice of weapons and tactics
- Track civilian harm
- Investigations & learning

PREVENTING AND ADDRESSING CIVILIAN HARM

PARTNERED OPERATIONS

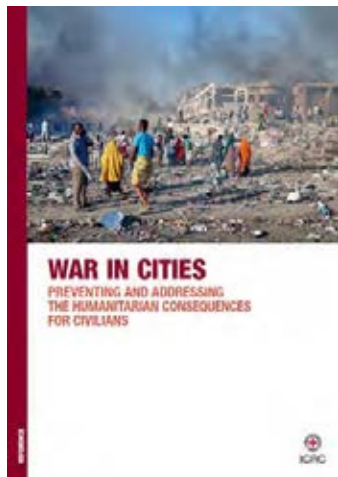
- Ensure approaches to PoC **aligned** and **consistent with IHL**
- Training
- Share **knowledge** and **expertise**
 - Environment
 - Systems and processes
 - Lessons
- Ensure **explosive weapons avoided**, including limiting arms transfers



KEY TAKEAWAYS

- Better compliance with IHL
- Reassess approach to operations in urban environments
- Impact on essential civilian services and humanitarian consequences are often foreseeable and so can be mitigated
- Avoid the use of explosive weapons in populated areas
- Tailor support to allies and partners to minimize humanitarian consequences and enhance protection

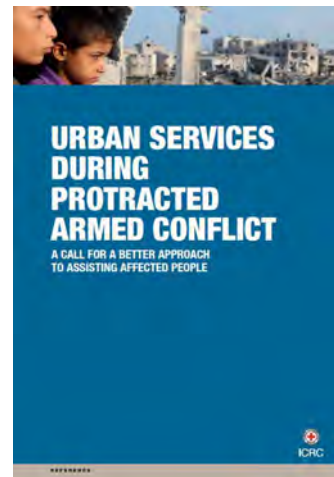
RESOURCES



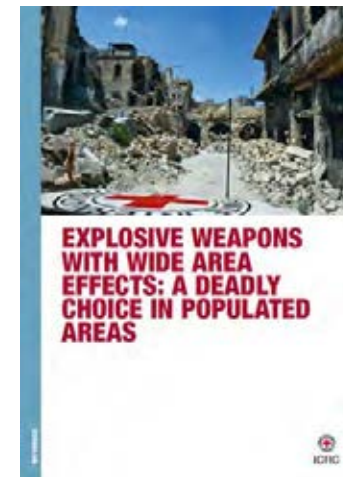
WAR IN CITIES:
PREVENTING AND
ADDRESSING THE
HUMANITARIAN
CONSEQUENCES
FOR CIVILIANS



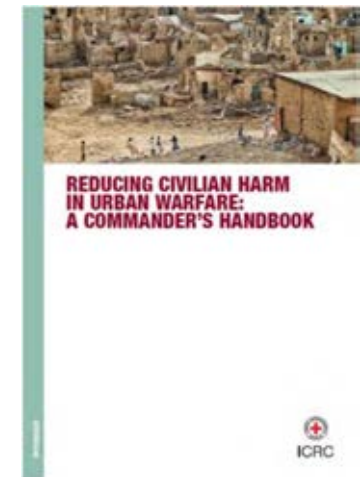
**CHILDHOOD IN
RUBBLE:**
THE HUMANITARIAN
CONSEQUENCES
OF URBAN
WARFARE FOR
CHILDREN



**URBAN SERVICES
DURING
PROTRACTED
ARMED CONFLICT:**
A CALL FOR A
BETTER
APPROACH TO
ASSISTING
AFFECTED
PEOPLE



**EXPLOSIVE
WEAPONS WITH
WIDE AREA
EFFECTS:**
A DEADLY CHOICE
IN POPULATED
AREAS



**REDUCING
CIVILIAN HARM IN
URBAN WARFARE:**
A COMMANDER'S
HANDBOOK

THANK YOU



CLEMENTINE RENDLE

Regional Legal Adviser

ICRC Regional Delegation in the
Pacific

crendle@icrc.org

